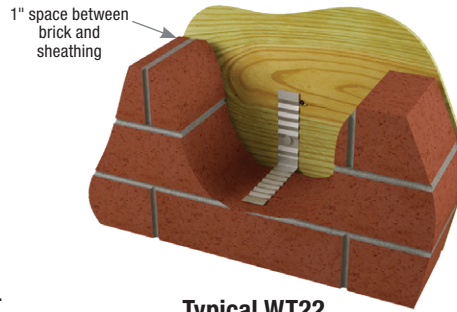
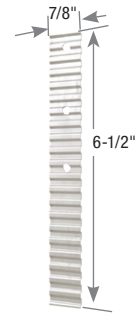


Materials: 22 gauge
Finish: G90 galvanizing
Options: See chart for Corrosion Finish Options

- Installation:**
- Use nails appropriate for intended use. See Product Notes, page 18.
 - The opposite end must be bonded in the mortar joint of brick facade.
 - Check local codes for spacing requirements.
 - Wall tie shall be bent at nail, bonding into mortar joint.



Typical WT22 installation



WT22

MiTek USP Stock No.	Ref. No.	Description	Steel Gauge	Dimensions (in)		Fastener Schedule ¹		Corrosion Finish	Code Ref.
				W	L	Qty	Type		
WT22	BTB	Straight Edge - Duplex	22	7/8	6-1/2	1	10d		--

1) **NAILS:** 10d nails are 0.148" dia. x 3" long.

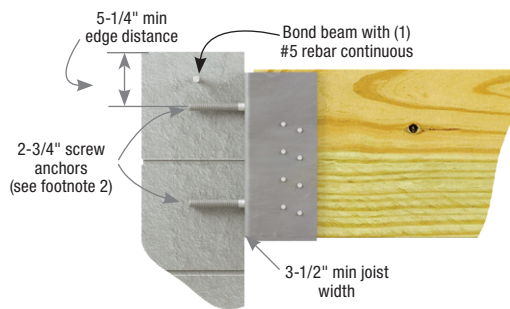
Corrosion Finish ■ Stainless Steel ■ Gold Coat ■ HDG ■ Triple Zinc

UMH Universal Masonry Hangers

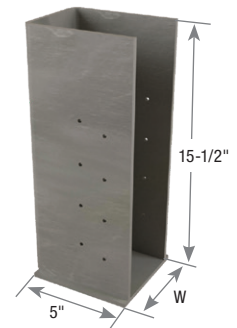
A versatile solution for hanging beams from masonry walls. Face mount design allows hanger to be used with beam heights from 16" to 24". Available in a variety of widths for solid sawn, glulam, or engineered lumber beams.

Materials: 3 gauge
Finish: Primer
Codes: FL

- Installation:**
- Use all specified fasteners. See Product Notes, page 18.
 - Fully grouted and reinforced concrete block or cast-in-place concrete with a minimum of (1) #5 rebar continuous to footing with standard hook at bolt locations.
 - Minimum joist width is 3-1/2".



Typical UMH installation



UMH

MiTek USP Stock No.	Ref. No.	Steel Gauge	W (in)	Fastener Schedule				DF/SP Allowable Loads (Lbs.)								Code Ref.
				Header ²		Joist ³		Masonry - 2,500 psi				Cast in Place Concrete - 3,000 psi				
				Qty	Screw Anchor	Qty	Type	Floor	Roof	Uplift ¹	100%	115%	125%	160%	Floor	
UMH358	MBHU3.56/16KT, MBHU3.56/18KT	3	3-5/8	2	3/4	16	16d	3550	3550	3550	3550	6380	6380	6380	4815	FL
UMH458	--	3	4-5/8	2	3/4	16	16d	3550	3550	3550	3550	6380	6380	6380	4815	
UMH538	--	3	5-3/8	2	3/4	16	16d	3550	3550	3550	3550	6380	6380	6380	4815	
UMH558	MBHU5.50/16KT, MBHU5.50/18KT	3	5-5/8	2	3/4	16	16d	3550	3550	3550	3550	6380	6380	6380	4815	
UMH718	--	3	7-1/8	2	3/4	16	16d	3550	3550	3550	3550	6380	6380	6380	4815	

1) Uplift loads have been increased 60% for wind or seismic loads; no further increase shall be permitted.
 2) Fasten UMH hanger to concrete structure with (2) 3/4" dia. DeWalt Screw-Bolt™+ screw anchors or equal with 5" minimum embedment. Screw anchors shall be installed in masonry with grouted cells in accordance with manufacturer's installation specifications.
 3) **NAILS:** 16d nails are 0.162" dia. x 3-1/2" long.

Copyright © 2020 MiTek Industries, Inc. All Rights Reserved

Hangers

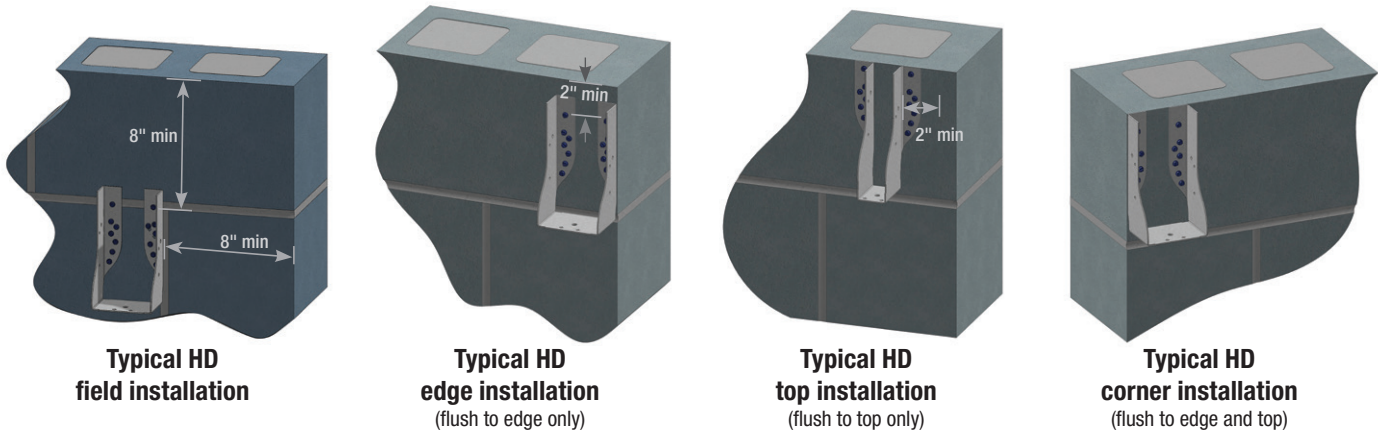
The HD series Face Mount hangers can be used to connect roof framing members, trusses, and floor joists to masonry walls.

Materials: 14 gauge

Finish: G90 galvanizing

Installation:

- Masonry screws shall be Powers® Tapper+® HWH 3/16" x 1-3/4".



MiTek USP Stock No.	Ref No.	Steel Gauge	Dimensions (in)			Fastener Schedule ²				DF/SP Allowable Load (Lbs.) ^{1,4,5,6}								Code Ref.
			W	H	D	Masonry ⁷		Joist/Beam		Download (100%)				Uplift (160%)				
						Qty	Tapper+® HWH Screw Anchor	Qty	Type ⁸	Field	Edge	Top	Corner	Field	Edge	Top	Corner	
HD26	HU26	14	1-9/16	3-1/2	2-1/2	4	3/16" x 1-3/4"	4	10d x 1-1/2	1000	495	670	335	145	70	145	45	--
HD28	HU28	14	1-9/16	5-1/4	2-1/2	8	3/16" x 1-3/4"	6	10d x 1-1/2	2000	990	1340	665	595	295	595	195	
HD210	HU210	14	1-9/16	7-3/16	2-1/2	14	3/16" x 1-3/4"	6	10d x 1-1/2	3110	1545	2085	1035	595	295	595	195	
HD212	--	14	1-9/16	9-13/16	2-1/2	20	3/16" x 1-3/4"	10	10d x 1-1/2	3640	1805	2440	1210	595	295	595	195	
HD26-2	HU26-2	14	3-1/8	5-1/4	2-1/2	12	3/16" x 1-3/4"	6	10d	3000	1490	2015	1000	1170	580	850	380	
HD28-2	HU28-2	14	3-1/8	7-1/8	2-1/2	14	3/16" x 1-3/4"	6	10d	3500	1735	2350	1165	1170	580	850	380	
HD210-2	HU210-2	14	3-1/8	9	2-1/2	20	3/16" x 1-3/4"	10	10d	5000	2480	3355	1665	1950	645	850	420	
HD212-2	HU212-2	14	3-1/8	11	2-1/2	24	3/16" x 1-3/4"	12	10d	5750	2850	3860	1915	2340	645	850	420	
HD44	HU44	14	3-9/16	3-5/16	2-1/2	4	3/16" x 1-3/4"	2	10d	1000	495	670	335	145	70	145	45	
HD46	HU46	14	3-9/16	5-1/16	2-1/2	12	3/16" x 1-3/4"	6	10d	3000	1490	2015	1000	1170	580	850	380	
HD48	HU48	14	3-9/16	6-15/16	2-1/2	14	3/16" x 1-3/4"	6	10d	3500	1735	2350	1165	1170	580	850	380	
HD410	HU410	14	3-9/16	8-13/16	2-1/2	20	3/16" x 1-3/4"	10	10d	5000	2480	3355	1665	1950	645	850	420	
HD412	--	14	3-9/16	10-13/16	2-1/2	24	3/16" x 1-3/4"	12	10d	5750	2850	3860	1915	2340	645	850	420	
HD26-3	HU26-3	14	4-5/8	4-1/2	2-1/2	12	3/16" x 1-3/4"	6	10d	3000	1490	2015	1000	1170	580	850	380	
HD28-3	--	14	4-5/8	6-3/8	2-1/2	14	3/16" x 1-3/4"	6	10d	3500	1735	2350	1165	1170	580	850	380	
HD210-3	HU210-3	14	4-5/8	8-1/4	2-1/2	20	3/16" x 1-3/4"	10	10d	5000	2480	3355	1665	1950	645	850	420	
HD212-3	HU212-3	14	4-5/8	10-1/4	2-1/2	24	3/16" x 1-3/4"	12	10d	5750	2850	3860	1915	2340	645	850	420	
HD5210	--	14	5-3/8	7-7/8	2-1/2	20	3/16" x 1-3/4"	10	10d	5000	2480	3355	1665	2305	645	850	420	
HD5212	--	14	5-3/8	9-7/8	2-1/2	24	3/16" x 1-3/4"	12	10d	5750	2850	3860	1915	2765	645	850	420	
HD66	HU66	14	5-1/2	4-1/16	2-1/2	12	3/16" x 1-3/4"	6	10d	2350	1165	1575	780	1380	645	850	420	
HD68	HU68	14	5-1/2	5-15/16	2-1/2	14	3/16" x 1-3/4"	6	10d	3500	1735	2350	1165	1380	645	850	420	
HD610	HU610	14	5-1/2	7-13/16	2-1/2	20	3/16" x 1-3/4"	10	10d	5000	2480	3355	1665	2305	645	850	420	
HD612	HU612	14	5-1/2	9-13/16	2-1/2	24	3/16" x 1-3/4"	12	10d	5750	2850	3860	1915	2765	645	850	420	

1) Allowable loads assume the use of Powers® Tapper+® HWH 3/16" x 1-3/4".
 2) Fasteners to be installed per manufacturer's recommendations.
 3) Field installation indicates that the uppermost and outermost fasteners are a minimum of 8" from the top and side of the masonry wall.
 4) Edge installation indicates that the hanger is installed flush with the edge of the masonry wall.
 5) Top installation indicates that the hanger is installed with the hanger flush with the top of the wall.
 6) Corner installation indicates that the hanger is installed in the corner of the masonry wall flush to the edge, and the top fastener is less than 2" from the top.
 7) **Minimum 6" wide grout-filled concrete masonry units with a minimum compressive strength of 1,500 psi (10.3 MPa).**
 8) **NAILS:** 10d x 1-1/2 nails are 0.148" dia. x 1-1/2 long, 10d nails are 0.148 dia. x 3" long.
 New products or updated product information are designated in **blue font**.

LGUM and HGUM Masonry Girder Hangers are high-capacity beam/girder hangers designed for installation to masonry or concrete walls. The LGUM and HGUM hangers use MiTek's WS structural wood screws (supplied) to attach the beam to hanger and screw anchors (supplied) to attach to the masonry or concrete wall. These hangers eliminate the need for constructing beam pockets.

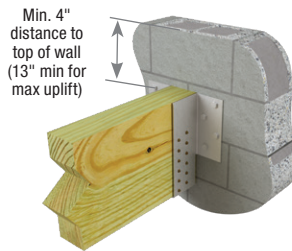
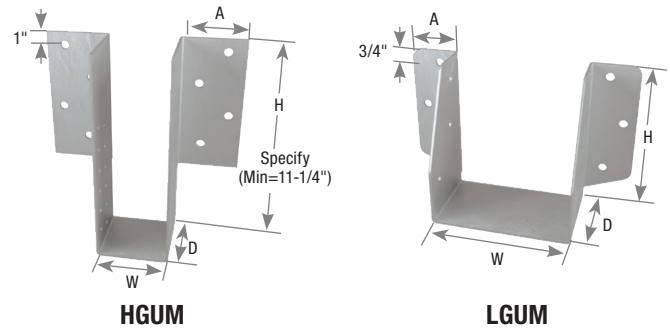
Materials: LGUM – 12 gauge; HGUM – 7 gauge

Finish: G90 galvanizing

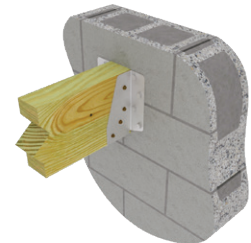
Options: See Specialty Options chart

Installation:

- MiTek's WS3 structural wood screws and screw anchors are supplied with hangers. Substituting other fasteners may reduce capacity.
- Beams comprised of multiple plies must be adequately fastened to act as a single member.
- Beam height dimension (H) must be specified when ordering HGUM hangers.
- Moisture barrier between beam and wall may be required by local jurisdiction.



Typical HGUM installation



Typical LGUM installation

MiTek USP Stock No.	Ref. No.	Steel Gauge	Dimensions (in.)				Fastener Schedule					DF Allowable Loads (Lbs.) ²				Code Ref.
			W	H ³	D	A	CMU/Concrete		Joist			Download (100/115/125%)		Uplift (160%) ¹		
							Qty	Screw Anchor ⁴	Qty	Type ⁵	CMU 1,500psi	Concrete 2,000 psi	4" Min. to Top of Wall	13" Min. to Top of Wall		
															CMU / Concrete	
Double 2x Sizes																
LGUM26-2	LGUM26-2-SDS	12	3-5/16	5-7/16	4	2-3/8	4	3/8" x 4"	4	WS3	6065	6425	2125	2125		
LGUM28-2	LGUM28-2-SDS	12	3-5/16	7-3/16	4	2-3/8	6	3/8" x 4"	6	WS3	8155	8155	2770	2770		
LGUM210-2	LGUM210-2-SDS	12	3-5/16	9-3/16	4	2-3/8	8	3/8" x 4"	8	WS3	9905	9905	3350	3350		
Triple 2x Sizes																
LGUM26-3	LGUM26-3-SDS	12	4-15/16	5-1/2	4	2-3/8	4	3/8" x 4"	4	WS3	6065	6425	2125	2125		
LGUM28-3	LGUM28-3-SDS	12	4-15/16	7-1/4	4	2-3/8	6	3/8" x 4"	6	WS3	8155	8155	2770	2770		
LGUM210-3	LGUM210-3-SDS	12	4-15/16	9-1/4	4	2-3/8	8	3/8" x 4"	8	WS3	9905	9905	3350	3350		
Quadruple 2x Sizes																
LGUM26-4	LGUM26-4-SDS	12	6-9/16	5-7/16	4	2-3/8	4	3/8" x 4"	4	WS3	6065	6425	2125	2125		
LGUM28-4	LGUM28-4-SDS	12	6-9/16	7-3/16	4	2-3/8	6	3/8" x 4"	6	WS3	8155	8155	2770	2770		
LGUM210-4	LGUM210-4-SDS	12	6-9/16	9-3/16	4	2-3/8	8	3/8" x 4"	8	WS3	9905	9905	3350	3350		
4x Sizes																
LGUM46	LGUM46-SDS	12	3-5/8	4-7/8	4	2-3/8	4	3/8" x 4"	4	WS3	6065	6425	2125	2125		
LGUM48	LGUM48-SDS	12	3-5/8	6-7/8	4	2-3/8	6	3/8" x 4"	6	WS3	8155	8155	2770	2770		
LGUM410	LGUM410-SDS	12	3-5/8	8-7/8	4	2-3/8	8	3/8" x 4"	8	WS3	9905	9905	3350	3350		
Engineered Wood & Structural Lumber Sizes (Heavy Duty)																
HGUM525	HGUM5.25-SDS	7	5-1/4	Specify 11-1/4 to 30	5-1/2	4-3/4	8	5/8" x 5"	24	WS3	16680	16680	4470	10130		
HGUM550	HGUM5.50-SDS	7	5-1/2		5-1/2	4-3/4	8	5/8" x 5"	24	WS3	16680	16680	4470	10130		
HGUM700	HGUM7.00-SDS	7	7		5-1/2	4-3/4	8	5/8" x 5"	24	WS3	16680	16680	4470	10130		
HGUM725	HGUM7.25-SDS	7	7-1/4		5-1/2	4-3/4	8	5/8" x 5"	24	WS3	16680	16680	4470	10130		
HGUM900	HGUM9.00-SDS	7	9		5-1/2	4-3/4	8	5/8" x 5"	24	WS3	16680	16680	4470	10130		

1) Uplift loads have been increased 60% for wind or seismic loads; no further increase shall be permitted.
 2) Allowable loads assume top header fasteners are a minimum of 4" from the top of the wall.
 3) "Specify" denotes the required supported beam height that must be specified at the time of ordering.
 4) Use DeWalt Screw-Bolt™+ (included); or equal, installed in accordance with manufacturer's specification.
 5) MiTek's WS3 structural wood screws are 1/4" dia. x 3" long and are included with hangers.

Specialty Options Chart – Refer to Specialty Options pages 320-321 for additional details.

Option	Inverted Flange
Range	One Inverted-Flange option available
Allowable Loads	50% of table download 75% of table uplift load
Ordering	Add /F and right (R) or left (L) to product number. Ex. HGUM525_H=18_IFL



Typical HGUM one inverted flange, left shown

These hangers are designed to support standard lumber joists, I-Joists, or beams. Easy installation into concrete block walls makes the MPH an attractive alternative to fabricating seats in masonry (or attaching ledgers) to support joists or beams.

Materials: 12 gauge

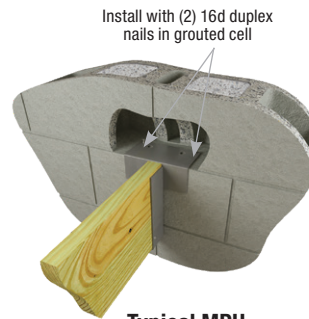
Finish: Primer

Options: All nominal lumber sizes are available for rough full size lumber. See Specialty Options Chart on page 189.

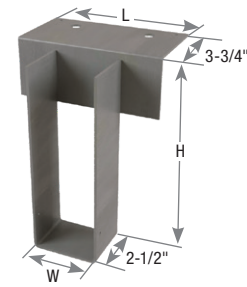
Codes: IBC, FL, LA

Installation:

- Use all specified fasteners. See Product Notes, page 18.
- 16d duplex nails are not supplied with MPH hangers.
- Place hanger into position on top of concrete block. Install (2) 16d duplex nails (0.162" dia. x 3-1/2" double head) through the top flange nail holes. Then continue laying the next course of block.
- A minimum of one course shall be laid over hanger top flange and one course below hanger top flange. Courses adjacent to the top flange shall be subsequently grouted.
- **These products do not provide uplift resistance.**



Typical MPH single-ply installation



MPH



Typical MPH double-ply installation

Beam/ Joist Size	MiTek USP Stock No.	Ref. No.	Steel Gauge	Dimensions (in)			Fastener Schedule ²				DF/SP Allowable Loads (Lbs.) ¹			Code Ref.
				W	H	L	Block		Joist		Floor	Roof		
							Qty	Type	Qty	Type		100%	115%	
Standard Lumber Sizes														
2 x 10	MPH210	WMU1.56/9.25	12	1-9/16	9-1/4	7	2	16d duplex	2	10d x 1-1/2	2610	2650	2675	IBC, FL, LA
2 x 12	MPH212	WMU1.56/11.25	12	1-9/16	11-1/4	7	2	16d duplex	2	10d x 1-1/2	2610	2650	2675	
2 x 14	MPH214	WMU1.56/14	12	1-9/16	13-1/8	7	2	16d duplex	2	10d x 1-1/2	2610	2650	2675	
2 x 16	MPH216	WMU1.56/16	12	1-9/16	15-1/8	7	2	16d duplex	2	10d x 1-1/2	2610	2650	2675	
(2) 2 x 10	MPH210-2	WMU3.12/9.25	12	3-1/8	9-1/4	7	2	16d duplex	2	10d	4430	4430	4430	
(2) 2 x 12	MPH212-2	WMU3.12/11.25	12	3-1/8	11-1/4	7	2	16d duplex	2	10d	4430	4430	4430	
(2) 2 x 14	MPH214-2	WMU3.12/14	12	3-1/8	13-1/8	7	2	16d duplex	2	10d	4430	4430	4430	
(2) 2 x 16	MPH216-2	WMU3.12/16	12	3-1/8	15-1/8	7	2	16d duplex	2	10d	4430	4430	4430	
3 x 10	MPH310	WMU2.56/9.25	12	2-9/16	9-1/4	7	2	16d duplex	2	10d x 1-1/2	3295	3295	3295	
3 x 12	MPH312	WMU2.56/11.25	12	2-9/16	11-1/4	7	2	16d duplex	2	10d x 1-1/2	3295	3295	3295	
3 x 14	MPH314	WMU2.56/13.25	12	2-9/16	13-1/8	7	2	16d duplex	2	10d x 1-1/2	3295	3295	3295	
3 x 16	MPH316	WMU2.56/15.25	12	2-9/16	15-1/8	7	2	16d duplex	2	10d x 1-1/2	3295	3295	3295	
4 x 10	MPH410	WMU3.56/9.25	12	3-9/16	9-1/4	7	2	16d duplex	2	10d	4430	4430	4430	
4 x 12	MPH412	WMU3.56/11.25	12	3-9/16	11-1/4	7	2	16d duplex	2	10d	4430	4430	4430	
4 x 14	MPH414	WMU3.56/13.25	12	3-9/16	13-1/8	7	2	16d duplex	2	10d	4430	4430	4430	
4 x 16	MPH416	WMU3.56/15.25	12	3-9/16	15-1/8	7	2	16d duplex	2	10d	4430	4430	4430	
6 x 10	MPH610	WMU5.50/9.5	12	5-9/16	9-1/4	7	2	16d duplex	2	10d	4430	4430	4430	
Engineered Lumber Sizes														
1-1/2 x 9-1/4	MPH210	WMU1.56/9.25	12	1-9/16	9-1/4	7	2	16d duplex	2	10d x 1-1/2	2610	2650	2675	IBC, FL, LA
1-1/2 x 9-1/2	MPH1595	WMU1.56/9.5	12	1-9/16	9-1/2	7	2	16d duplex	2	10d x 1-1/2	2610	2650	2675	
1-1/2 x 11-1/4	MPH212	WMU1.56/11.25	12	1-9/16	11-1/4	7	2	16d duplex	2	10d x 1-1/2	2610	2650	2675	
1-1/2 x 11-7/8	MPH15118	WMU1.56/11.88	12	1-9/16	11-7/8	7	2	16d duplex	2	10d x 1-1/2	2610	2650	2675	
1-1/2 x 14	MPH1514	WMU1.56/14	12	1-9/16	14	7	2	16d duplex	2	10d x 1-1/2	2610	2650	2675	
1-3/4 x 9-1/2	MPH1795	WMU1.81/9.5	12	1-13/16	9-1/2	7	2	16d duplex	2	10d x 1-1/2	3000	3040	3065	
1-3/4 x 11-7/8	MPH17118	WMU1.81/11.88	12	1-13/16	11-7/8	7	2	16d duplex	2	10d x 1-1/2	3000	3040	3065	
1-3/4 x 14	MPH1714	WMU1.81/14	12	1-13/16	14	7	2	16d duplex	2	10d x 1-1/2	3000	3040	3065	
1-3/4 x 16	MPH1716	WMU1.81/16	12	1-13/16	16	7	2	16d duplex	2	10d x 1-1/2	3000	3040	3065	

1) Masonry compressive strength shall be minimum 1500 psi.

2) **NAILS:** 10d x 1-1/2 nails are 0.148" dia. x 1-1/2" long, 10d nails are 0.148" dia. x 3" long, 16d duplex nails are 0.162" dia. x 3-1/2" long, double headed nails and shall be installed in grouted cells in accordance to manufacturer's installation specifications.

New products or updated product information are designated in **blue font**.

Continued on next page

HWUH Heavy-Duty Welded Universal Hangers

Hangers

Versatile heavy-duty top flange hanger attaches to both wood and masonry. Unique design allows builders to use one style hanger on the job when the structure has a variety of support materials.

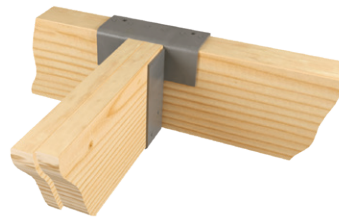
Materials: Top Flange – 3 gauge; Stirrup – 7 gauge

Finish: Primer

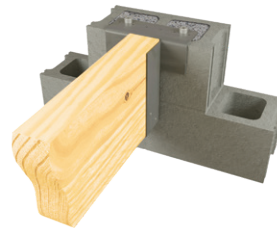
Options: See Specialty Options Chart on page 191

Installation:

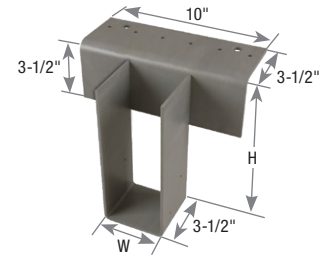
- Use all specified fasteners. See Product Notes, page 18.
- NA21 nails are included with hangers where specified.
- **NA21 nails are not recommended for use with LVL, PSL, or LSL headers.**
- Masonry design load values apply to both solid concrete tie beams and grout-filled CMU walls.
- Alternate installation – Use (2) 1/2" x 4" DeWalt Screw-Bolt+™ or equal for loads up to 2,400 lbs. when attaching to CMU. Loads shall not exceed table loads.



Typical HWUH410 wood-to-wood installation



Typical HWUH410 wood-to-masonry installation



HWUH

Beam/ Joist Size	MiTek USP Stock No.	Ref. No.	Dimensions (in)		Installation Type	Fastener Schedule ²				DF/SP Allowable Loads (Lbs.)				Code Ref.
			W	H		Supporting Member		Supported Member		Allowable Loads (Lbs.)				
						Qty	Type	Qty	Type	Floor	Roof	Uplift ¹		
2 x 4 - 6	HWUH26	--	1-5/8	5-3/8	Wood	6	10d	4	10d x 1-1/2	3925	4020	4085	955	
					Masonry	2	1/2" x 6" J-Bolt			3060	3060	3060	1030	
2 x 8	HWUH28	--	1-5/8	7-1/8	Wood	6	10d	4	10d x 1-1/2	3925	4020	4085	955	
					Masonry	2	1/2" x 6" J-Bolt			3060	3060	3060	1030	
2 x 10	HWUH210	--	1-5/8	9-1/8	Wood	6	10d	4	10d x 1-1/2	3925	4020	4085	955	
					Masonry	2	1/2" x 6" J-Bolt			3060	3060	3060	1030	
2 x 12	HWUH212	--	1-5/8	11	Wood	6	10d	4	10d x 1-1/2	3925	4020	4085	955	
					Masonry	2	1/2" x 6" J-Bolt			3060	3060	3060	1030	
2 x 14	HWUH214	--	1-5/8	13	Wood	6	10d	4	10d x 1-1/2	3925	4020	4085	955	
					Masonry	2	1/2" x 6" J-Bolt			3060	3060	3060	1030	
2 x 16	HWUH216	--	1-5/8	16	Wood	6	10d	4	10d x 1-1/2	3925	4020	4085	955	
					Masonry	2	1/2" x 6" J-Bolt			3060	3060	3060	1030	
3 x 6	HWUH36	--	2-5/8	5-3/8	Wood	6	10d	4	10d	4615	4615	4615	955	
					Masonry	2	1/2" x 6" J-Bolt			3060	3060	3060	1030	
3 x 8	HWUH38	--	2-5/8	7-1/8	Wood	6	10d	4	10d	4615	4615	4615	955	
					Masonry	2	1/2" x 6" J-Bolt			3060	3060	3060	1030	
3 x 10	HWUH310	--	2-5/8	9-1/8	Wood	6	10d	4	10d	4615	4615	4615	955	
					Masonry	2	1/2" x 6" J-Bolt			3060	3060	3060	1030	
3 x 12	HWUH312	--	2-5/8	11	Wood	6	10d	4	10d	4615	4615	4615	955	
					Masonry	2	1/2" x 6" J-Bolt			3060	3060	3060	1030	
3 x 14	HWUH314	--	2-5/8	13	Wood	6	10d	4	10d	4615	4615	4615	955	
					Masonry	2	1/2" x 6" J-Bolt			3060	3060	3060	1030	
3 x 16	HWUH316	--	2-5/8	16	Wood	6	10d	4	10d	4615	4615	4615	955	
					Masonry	2	1/2" x 6" J-Bolt			3060	3060	3060	1030	
(2) 2 x 6	HWUH26-2	--	3-1/8	5-3/8	Wood	6	10d	4	10d	4615	4615	4615	955	
					Masonry	2	1/2" x 6" J-Bolt			3060	3060	3060	1030	
(2) 2 x 8	HWUH28-2	--	3-1/8	7-1/8	Wood	6	10d	4	10d	4615	4615	4615	955	
					Masonry	2	1/2" x 6" J-Bolt			3060	3060	3060	1030	
(2) 2 x 10	HWUH210-2	--	3-1/8	9-1/8	Wood	6	10d	4	10d	4615	4615	4615	955	
					Masonry	2	1/2" x 6" J-Bolt			3060	3060	3060	1030	
(2) 2 x 12	HWUH212-2	--	3-1/8	11	Wood	6	10d	4	10d	4615	4615	4615	955	
					Masonry	2	1/2" x 6" J-Bolt			3060	3060	3060	1030	
(2) 2 x 14	HWUH214-2	--	3-1/8	13	Wood	6	10d	4	10d	4615	4615	4615	955	
					Masonry	2	1/2" x 6" J-Bolt			3060	3060	3060	1030	
(2) 2 x 16	HWUH216-2	--	3-1/8	16	Wood	6	10d	4	10d	4615	4615	4615	955	
					Masonry	2	1/2" x 6" J-Bolt			3060	3060	3060	1030	

1) Uplift loads have been increased 60% for wind or seismic loads; no further increase shall be permitted.

2) **NAILS:** 10d nails are 0.148" dia. x 3" long.

Continued on next page

Beam/ Joist Size	MiTek USP Stock No.	Ref. No.	Dimensions (in)		Installation Type	Fastener Schedule ²				DF/SP Allowable Loads (Lbs.)				Code Ref.				
			W	H		Supporting Member		Supported Member		Floor	Roof		Uplift ¹					
						Wood		Qty	Type		Qty	Type			100%	115%	125%	160%
						Qty	Type											
4 x 6	HWUH46	--	3-9/16	5-3/8	Wood	6	NA21	4	10d	5265	5265	5265	675	--				
					Masonry	2	1/2" x 6" J-Bolt			3060	3060	3060	1030					
4 x 8	HWUH48	--	3-9/16	7-1/8	Wood	6	NA21	4	10d	5265	5265	5265	675					
					Masonry	2	1/2" x 6" J-Bolt			3060	3060	3060	1030					
4 x 10	HWUH410	--	3-9/16	9-1/8	Wood	6	NA21	4	10d	5265	5265	5265	675					
					Masonry	2	1/2" x 6" J-Bolt			3060	3060	3060	1030					
4 x 12	HWUH412	--	3-9/16	11	Wood	6	NA21	4	10d	5265	5265	5265	675					
					Masonry	2	1/2" x 6" J-Bolt			3060	3060	3060	1030					
4 x 14	HWUH414	--	3-9/16	13	Wood	6	NA21	4	10d	5265	5265	5265	675					
					Masonry	2	1/2" x 6" J-Bolt			3060	3060	3060	1030					
4 x 16	HWUH416	--	3-9/16	16	Wood	6	NA21	4	10d	5265	5265	5265	675					
					Masonry	2	1/2" x 6" J-Bolt			3060	3060	3060	1030					
6 x 6	HWUH66	--	5-1/2	5-3/8	Wood	6	NA21	4	10d	5265	5265	5265	675					
					Masonry	2	1/2" x 6" J-Bolt			3060	3060	3060	1030					
6 x 8	HWUH68	--	5-1/2	7-1/8	Wood	6	NA21	4	10d	5265	5265	5265	675					
					Masonry	2	1/2" x 6" J-Bolt			3060	3060	3060	1030					
6 x 10	HWUH610	--	5-1/2	9-1/8	Wood	6	NA21	4	10d	5265	5265	5265	675					
					Masonry	2	1/2" x 6" J-Bolt			3060	3060	3060	1030					
6 x 12	HWUH612	--	5-1/2	11	Wood	6	NA21	4	10d	5265	5265	5265	675					
					Masonry	2	1/2" x 6" J-Bolt			3060	3060	3060	1030					
6 x 14	HWUH614	--	5-1/2	13	Wood	6	NA21	4	10d	5265	5265	5265	675					
					Masonry	2	1/2" x 6" J-Bolt			3060	3060	3060	1030					
6 x 16	HWUH616	--	5-1/2	16	Wood	6	NA21	4	10d	5265	5265	5265	675					
					Masonry	2	1/2" x 6" J-Bolt			3060	3060	3060	1030					
8 x 6	HWUH86	--	7-1/2	5-3/8	Wood	6	NA21	4	10d	5265	5265	5265	675					
					Masonry	2	1/2" x 6" J-Bolt			3060	3060	3060	1030					
8 x 8	HWUH88	--	7-1/2	7-1/8	Wood	6	NA21	4	10d	5265	5265	5265	675					
					Masonry	2	1/2" x 6" J-Bolt			3060	3060	3060	1030					
8 x 10	HWUH810	--	7-1/2	9-1/8	Wood	6	NA21	4	10d	5265	5265	5265	675					
					Masonry	2	1/2" x 6" J-Bolt			3060	3060	3060	1030					
8 x 12	HWUH812	--	7-1/2	11	Wood	6	NA21	4	10d	5265	5265	5265	675					
					Masonry	2	1/2" x 6" J-Bolt			3060	3060	3060	1030					
8 x 14	HWUH814	--	7-1/2	13	Wood	6	NA21	4	10d	5265	5265	5265	675					
					Masonry	2	1/2" x 6" J-Bolt			3060	3060	3060	1030					
8 x 16	HWUH816	--	7-1/2	16	Wood	6	NA21	4	10d	5265	5265	5265	675					
					Masonry	2	1/2" x 6" J-Bolt			3060	3060	3060	1030					

- 1) Uplift loads have been increased 60% for wind or seismic loads; no further increase shall be permitted.
- 2) **NAILS:** NA21 nails are 0.192" dia. x 1-3/4" long and are included with 4x, 6x, and 8x HWUH hangers.

Specialty Options Chart

Refer to Specialty Options pages 320, 322-323 for additional details.

Option	Skewed ^{1,3}	Sloped Seat ²	Sloped / Skewed ^{1,2,3}	Top Flange Offset		Saddle
Range	1° to 45°	1° to 45°	See Sloped Seat and Skewed	--		--
Allowable Loads	100% of table load	100% of table load	100% of table load	Hanger Width 3-1/2" or less 3-9/16" to 5-1/2" 5-9/16" to 7-1/2"	% of table load: 60% 75% 85%	100% of table load per side
Ordering	Add <i>SK</i> , angle required, right (<i>R</i>) or left (<i>L</i>), and square cut (<i>SQ</i>) or bevel cut (<i>BV</i>) to product number. Ex. HWUH410_SK45R_SQ	Add <i>SL</i> , slope required, and up (<i>U</i>) or down (<i>D</i>), to product number. Ex. HWUH410_SL30D	See Sloped Seat and Skewed. Ex. HWUH410_SK45R_SQ_SL30D	Add <i>OS</i> , and right (<i>R</i>) or left (<i>L</i>), to product number. Ex. HWUH410_OL		Add <i>SA</i> , and saddle width required to product number. Ex. HWUH410_SA=5-1/2"

- 1) Skewed hangers with skews greater than 15° may have all joist nailing on outside flange.
- 2) Sloped or sloped / skewed hangers with slopes greater than 15° may have additional joist nails.
- 3) For skewed hangers, the required cut type (square or bevel) of joist member may vary based on skew angle and width of hanger. Some square cut hangers will require custom pricing due to welded back plate.

NFM – Standard design

NFM_U – High uplift design

Materials: Top Flange – 3/8" steel; U-strap – 7 gauge

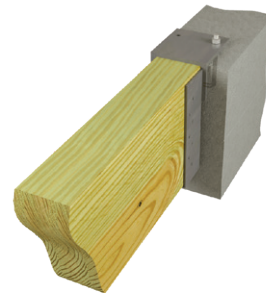
Finish: Primer

Options: See Specialty Options Chart on page 193

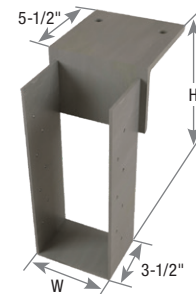
Codes: See chart for code references

Installation:

- Use all specified fasteners. See Product Notes, page 18.
- Designed for both concrete walls and grout-filled reinforced CMU walls.



Typical NFM installation



NFM3



Typical NFM_U installation



NFM3X12U

MiTek USP Stock No.	Ref. No.	Steel Gauge		Dimensions (in)		Fastener Schedule				DF/SP Allowable Loads (Lbs.) ^{1,2}				Code Ref.
		Top Flange	U-Strap	W	H	Header ^{3,4,5}		Joist ⁶		Floor 100%	Roof		Uplift 160%	
						Qty	Type	Qty	Type		115%	125%		
NFM3X8	--	3/8	7	3-1/8	7-1/4	1	1/2" J-Bolt	10	10d	6720	6720	6720	1415	FL
NFM3X10	--	3/8	7	3-1/8	9-1/4	1	1/2" J-Bolt	12	10d	6720	6720	6720	1415	
NFM3X10U	MBHA3.12/9.25	3/8	7	3-1/8	9-1/4	1	1/2" J-Bolt	5	1/2" Bolt	7130	7130	7130	2580	
NFM3X12	--	3/8	7	3-1/8	11-1/4	1	1/2" J-Bolt	14	10d	6720	6720	6720	1415	
NFM3X12U	MBHA3.12/11.25	3/8	7	3-1/8	11-1/4	1	1/2" J-Bolt	5	1/2" Bolt	7130	7130	7130	2580	
NFM3	--	3/8	7	3-3/8	11-3/4	1	1/2" J-Bolt	14	10d	7510	7510	7510	1415	
NFM35X8	--	3/8	7	3-5/8	7-1/4	1	1/2" J-Bolt	10	10d	7510	7510	7510	1415	
NFM35X8U	MBHA3.56/7.25	3/8	7	3-5/8	7-1/4	1	1/2" J-Bolt	3	1/2" Bolt	7130	7130	7130	2580	
NFM35X10	--	3/8	7	3-5/8	9-1/4	1	1/2" J-Bolt	12	10d	7510	7510	7510	1415	
NFM35X10U	MBHA3.56/9.25	3/8	7	3-5/8	9-1/4	1	1/2" J-Bolt	5	1/2" Bolt	7130	7130	7130	2580	
NFM35X12	--	3/8	7	3-5/8	11-1/4	1	1/2" J-Bolt	14	10d	7510	7510	7510	1415	
NFM35X12U	MBHA3.56/11.25	3/8	7	3-5/8	11-1/4	1	1/2" J-Bolt	5	1/2" Bolt	7130	7130	7130	2580	
NFM35X1178	--	3/8	7	3-5/8	11-7/8	1	1/2" J-Bolt	14	10d	7510	7510	7510	1415	
NFM35X1178U	MBHA3.56/11.88	3/8	7	3-5/8	11-7/8	1	1/2" J-Bolt	5	1/2" Bolt	7130	7130	7130	2580	
NFM35X14	--	3/8	7	3-5/8	14	1	1/2" J-Bolt	14	10d	7510	7510	7510	1415	--
NFM35X14U	MBHA3.56/14	3/8	7	3-5/8	14	1	1/2" J-Bolt	5	1/2" Bolt	7130	7130	7130	2580	FL
NFM35X16	--	3/8	7	3-5/8	16	1	1/2" J-Bolt	14	10d	7510	7510	7510	1415	
NFM35X16U	MBHA3.56/16	3/8	7	3-5/8	16	1	1/2" J-Bolt	5	1/2" Bolt	7130	7130	7130	2580	
NFM35X18	--	3/8	7	3-5/8	18	1	1/2" J-Bolt	14	10d	7510	7510	7510	1415	
NFM35X18U	MBHA3.56/18	3/8	7	3-5/8	18	1	1/2" J-Bolt	5	1/2" Bolt	7130	7130	7130	2580	

- 1) Allowable loads are based on 2,500 psi concrete or masonry.
- 2) Design loads are governed by test ultimate loads with a safety factor of three.
- 3) J-Bolt shall be cast-in-place and have a minimum 6" embedment and not less than 4" from the edge of concrete.
- 4) In addition to the J-Bolt, "U" models also require a 3/4" dia. ITW Ramset/Redhead Dyna Bolt sleeve anchor or equal with minimum 5" embedment depth installed in the face. Bolt shall be installed in accordance with installation specifications provided by ITW Ramset.
- 5) Bolts shall conform to ASTM A 307 or better.
- 6) **NAILS:** 10d nails are 0.148" dia. x 3" long

Continued on next page

MiTek USP Stock No.	Ref. No.	Steel Gauge		Dimensions (in)		Fastener Schedule				DF/SP Allowable Loads (Lbs.) ^{1,2}				Code Ref.
		Top Flange	U-Strap	W	H	Header ^{3,4,5}		Joist ⁶		Allowable Loads (Lbs.) ^{1,2}				
						Qty	Type	Qty	Type	Floor	Roof		Uplift	
100%	115%	125%	160%											
NFM6X8U	MBHA5.50/7.25	3/8	7	5-5/8	7-1/4	1	1/2" J-Bolt	3	1/2" Bolt	10310	10310	10310	2580	FL
NFM6X10U	MBHA5.50/9.25	3/8	7	5-5/8	9-1/4	1	1/2" J-Bolt	5	1/2" Bolt	10310	10310	10310	2580	
NFM6X12U	MBHA5.50/11.25	3/8	7	5-5/8	11-1/4	1	1/2" J-Bolt	5	1/2" Bolt	10310	10310	10310	2580	
NFM6X1178	--	3/8	7	5-5/8	11-7/8	1	1/2" J-Bolt	14	10d	7510	7510	7510	1415	
NFM6X1178U	MBHA5.50/11.88	3/8	7	5-5/8	11-7/8	1	1/2" J-Bolt	5	1/2" Bolt	10310	10310	10310	2580	
NFM6X14U	MBHA5.50/14	3/8	7	5-5/8	14	1	1/2" J-Bolt	5	1/2" Bolt	10310	10310	10310	2580	
NFM6X16	--	3/8	7	5-5/8	16	1	1/2" J-Bolt	14	10d	7510	7510	7510	1415	
NFM6X16U	MBHA5.50/16	3/8	7	5-5/8	16	1	1/2" J-Bolt	5	1/2" Bolt	10310	10310	10310	2580	
NFM6X18	--	3/8	7	5-5/8	18	1	1/2" J-Bolt	14	10d	7510	7510	7510	1415	
NFM6X18U	MBHA5.50/18	3/8	7	5-5/8	18	1	1/2" J-Bolt	5	1/2" Bolt	10310	10310	10310	2580	

- 1) Allowable loads are based on 2,500 psi concrete or masonry.
- 2) Design loads are governed by test ultimate loads with a safety factor of three.
- 3) J-Bolt shall be cast-in-place and have a minimum 6" embedment and not less than 4" from the edge of concrete.
- 4) In addition to the J-Bolt, "U" models also require a 3/4" dia. ITW Ramset/Redhead Dyna Bolt sleeve anchor or equal with minimum 5" embedment depth installed in the face. Bolt shall be installed in accordance with installation specifications provided by ITW Ramset.
- 5) Bolts shall conform to ASTM A 307 or better.
- 6) **NAILS:** 10d nails are 0.148" dia. x 3" long

Specialty Options Chart

Refer to Specialty Options pages 320, 322-323 for additional details.

Option	MiTek USP Series	Skewed ^{1,2}
Range	NFM / NFMU	1° to 45°
Allowable Loads	NFM / NFMU	100% of table load
Ordering	NFM	Add <i>SK</i> , angle required, right (<i>R</i>) or left (<i>L</i>), and square cut (<i>SQ</i>) or bevel cut (<i>BI</i>) to product number. Ex. NFM3_SK45R_BV
	NFMU	Add <i>SK</i> , angle required, right (<i>R</i>) or left (<i>L</i>), and square cut (<i>SQ</i>) to product number. Ex. NFM35X8U_SK45R_SQ

- 1) Skewed hangers with skews greater than 15° may have all joist nailing on outside flange.
- 2) For skewed hangers, the required cut type (square or bevel) of joist member may vary based on skew angle and width of hanger. Some square cut hangers will require custom pricing due to welded back plate.